

No images? [Click here](#)



Brent Cross Cricklewood Transformation Update



Wood you believe how good the new railway station looks?

The eastern entrance of the forthcoming Brent Cross West railway station has been granted planning permission, and will feature timber frames alongside a range of environmental innovations.

The design by architects Studio Egret West features a roof canopy of glazed panels resting on timber columns, with vines connected to ground floor planters by a wire trellis system, and ornamental trees in the entranceway.

The station work is also placing a premium on localism and inclusivity, with 20 per cent of the people working on the build being residents of Barnet, Brent and Camden boroughs.

Read the full story [here](#) and learn the background of the station project [here](#).



Entrepreneur Sean uses his loaf

Our regular focus on local businesses saw us meet Sean Chambers this month, who told us about Sean's Loaf.

The business started in January, and sees Sean make home deliveries of everything from loaves and baguettes to mince pies and chocolate chestnut brownies.

Sean, who previously worked as a chef for more than 20 years, creates his wares in his Cricklewood microbakery, and cycles around 100 miles per week making deliveries. And that is addition to his work baking wholesale too!

We will continue to focus on a variety of local businesses in 2021. Read more about Sean's Loaf [here](#).



Tell us about the best local businesses

Do you know of a local business which deserves wider attention? Or perhaps you run a store where people can shop locally?

We want to support our community in shopping safe and shopping local. So get in touch by telling us about local firms who play a key role where you live or work, so that we can help to celebrate the role they play.

Read previous case studies [here](#).

Contact us on TransformingBX@barnet.gov.uk

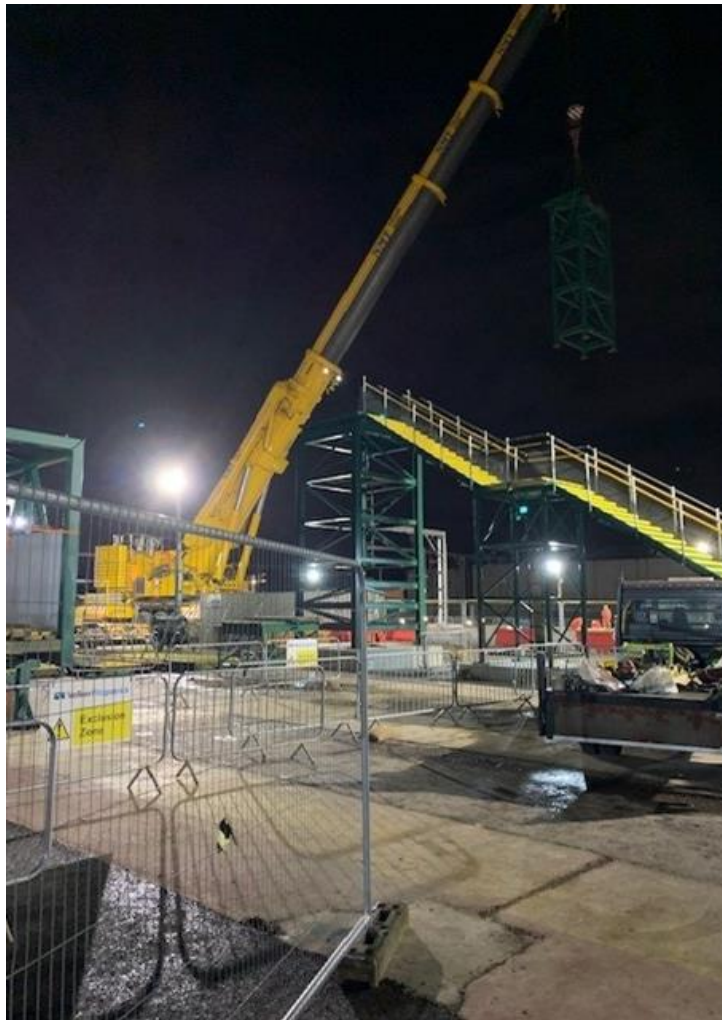


Student accommodation consultation

Halls of residence for 600 students will be a key feature of the Brent Cross Cricklewood scheme, and now you can have your say on their design.

The building will be made up of three connected blocks, and be home to students from universities across north and central London. Management staff will be on-site 24/7 in buildings featuring a study, breakout spaces, a gym and games area.

The consultation closes on December 20. If you would like to hear more about the project, speak with the team, or ask questions, contact the project team by emailing community@brentcrosstown.co.uk You can also leave feedback on the online form [here](#).



More train station landmarks

Two more landmarks were reached in December at Brent Cross West station.

135 underground concrete piles were installed, as mentioned in last month's newsletter. This marked the completion of the first phase of construction. Also in December, a temporary bridge was installed, which will allow workers and construction materials to safely reach the slow line concourse construction areas whilst trains continue to run on the line. Read more [here](#).

The new £40 million state-of-the-art Brent Cross West station is a key element of the regeneration programme. Once completed the station will connect Brent Cross to central London, with up to eight trains every hour.



Works updates

Additional lane closures have been put in place around our roadworks programme, in order to encourage pedestrians to use safe routes. This involves a one-way road closure of Cricklewood Lane from Lichfield Road / Claremont Road, and a southbound lane closure on Cricklewood Broadway. Read more [here](#).

Work will continue at the railway site over the festive period. People living nearby have been sent letters warning them of potential disturbance, with information also available [here](#), and workers have been instructed to be considerate at this time.

And remember you can visit our [interactive map](#) to see the latest works information.



Rubbish dates for your diary

There will be some changes to bin collection schedules over the festive period, for three weeks from 21 December. Go [here](#) to check for any changes to your normal recycling and refuse collection days.

In instances of severe weather there may be some delay to collections. Barnet Council will try to complete all collections wherever possible but updates will be provided on [Facebook](#) and [Twitter](#).



Follow us on Twitter [@TransformingBX](#)

You are receiving this email because you subscribed via the [TransformingBX.co.uk](#) website. If you've changed your mind you can click the button to unsubscribe at any time.



[Preferences](#) | [Unsubscribe](#)