



Inside you'll find permitted works to build the **Brent Cross West station** and the new homes between **Brent Terrace** and **Clitterhouse Crescent** (also known as Plots 53 and 54).



BXW construction programme



Plots 53 and 54 works schedule



Clitterhouse Playing Fields consultation



Our sites are registered with the Considerate Constructors Scheme which monitors sites for the efforts they take to minimise their impact on the local community.

CONSTRUCTION ACTIVITIES: BR

Barnet Council, in partnership with Mace, are working with Network Rail, VolkerFitzpatrick, and Amey to build the new Brent Cross West station which is due to be completed next year.

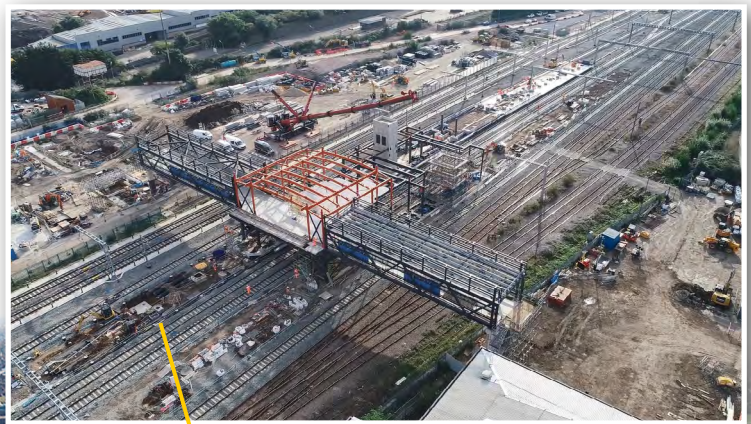
Below is the work happening on site that may impact you. From time-to-time the programme could change, or works may be more noisy than usual. If you would like to be notified about noisy works due to take place overnight let us know and we'll add you to our local distribution list (contact details over the page).

You'll also find a three-month programme of permitted construction works at TransformingBX.co.uk/new-station

WORKING HOURS

Our standard working hours on the project are Monday to Saturday 8am to 9pm and, where consented, Sundays 8am to 5pm.

However, over the next three months certain teams will be working day and night during the week and weekends, as permitted by the local authority. This includes every Saturday day and night until Christmas.



What's happening where



ENT CROSS WEST



1 SIDINGS AND TRACK WORKS

- On the 9 to 15 October and on weekdays from the 18 October to the 3 November, the team will be carrying out general groundworks, drainage and lighting works to the North Sidings behind the Waste Transfer Station.
- On 9 and 10 October, 23 and 24 October, 6 and 7 November, 20 and 21 November, 27 and 28 November, 4 and 5 December, there will be track work where some tamping and welding will take place.
- From 4 to 8 October, 11 to 15 October, 6 and 7 November, 20 and 21 November, 27 and 28 November, and 1 and 2 January, teams will carry out the electrification of the overhead lines.
- As the piling in this area has been completed we expect these activities to be quieter than they were previously but there could be some noise during the above days.
- From 29 November, for approximately seven weeks, teams will carry out work on a Thames Water access chamber near the Train Operators' Compound. This will require some breaking out of the car park. The work will take place during weekday working hours. We will notify residents before works start.

2 MAIN STATION WORKS

- Key construction activities on the main station include drainage installation, structural steelworks to the platforms and station concourse, and concrete platform installation.
- Groundworks will also be completed for station buildings and lift shafts, and the building structure completed.
- These works will take place on weekdays and weekends, including Christmas Day, Boxing Day the 27 and 28 December, New Year's Day and 2 January, and will continue until May 2022.
- The last few months have been extremely busy on site with the completion of tracks, structural steelworks, piling, drainage and platform works.
- Piling works were completed on the new station on the 10 September so the works on site should be much quieter now.
- We surround any noisy equipment with acoustic barriers whenever possible.

BRENT TERRACE (NORTH)

Galldris, for the Brent Cross Town development, will be demolishing Clockwork Removals and the Cemex batching plant on Brent Terrace (North). Works will start at the end of October and be completed in February 2022. Working hours are Monday to Friday 8am to 6pm and Saturday 8am to 1pm (with a half-hour set up / set down period). Teams will be removing the superstructure, hardstandings, foundations and vegetation around the buildings.

More information can be found at BrentCrossTown.co.uk

CLITTERHOUSE PLAYING FIELDS

Archaeological surveys are due to begin on Clitterhouse Playing Fields, led by the Museum of London Archaeology (MOLA). Investigations will include a series of shallow exploratory trenches across the playing fields that will be covered and re-grassed upon completion.

In October, we'll begin our first round of consultation on Clitterhouse Playing Fields. This will feature online surveys, live events and group discussions. To find out more visit bxt.uk/cpfconsult



PLOTS 53 AND 54

Working hours: Monday to Friday 8am to 6pm and Saturday 8am to 1pm

Contractors Buglers, on behalf of L&Q, started work on Plots 53 and 54 on 21 June and will take around 20 months to complete the new homes.

Teams are working hard to minimise the impact of this development. Dust and noise is being monitored and the road is being swept on a regular basis. Details of expected construction traffic to site will be displayed on the community noticeboards on the site hoarding.

1 HOARDING INSTALLATION AND SITE SET UP

- The hoarding has now been set up around the development with community notice boards at the end of each site.
- The site office and staff welfare facilities have also now been set up and opened.
- Initially the hoarding will be black with L&Q's logo. However L&Q and Buglers will liaise with residents and families of Brent Terrace to adapt some sections with pictures, artwork or something interactive for the community to use. Watch this space!

2 EXCAVATIONS AND PILING

- Teams working on site are currently carrying out excavations to level the ground. You will therefore see around fifteen trucks visiting site to collect unneeded soil each day.
- Piling will start in mid-October to lay the foundations of the buildings and secure the boundary of the site due to the level differences.
- We expect there to be some noise and vibration during working hours but this will be quieter than the steel tubular piling completed on the new station.
- Piling will take approximately eight weeks to complete. There will be around six concrete wagons a day coming to site during this time. There will also be a low loader coming to site on the 11 and 18 October to facilitate the piling.

Meet Helena: Resident Liaison Officer

- Helena O'Keeffe has joined the Buglers Team as Resident Liaison Officer for this development.
- Helena can be contacted on 01923 777 988 or 07706 350 588 or via email at HelenaOKeeffe@bugler.co.uk



CONTACT US

You can find out more about the Brent Cross Cricklewood regeneration programme by visiting [TransformingBX.co.uk](https://www.transformingbx.co.uk)

If you have a question or concern, please email the project team at TransformingBX@Barnet.gov.uk