

# BUILDING BRENT CROSS WEST



Brent Cross West is part of the biggest redevelopment and growth programme Barnet Council has ever undertaken. It is amongst one of the most ambitious in Europe. It will bring thousands of much needed new homes to the area, improved schools and community facilities, leisure, retail and offices, as well as creating 25,000 jobs.

It plays a huge role in improving pedestrian and transport connectivity in the area. The new overbridge gives pedestrians the ability to cross this part of the Midland Main Line for the first time since it was built more than 150 years ago. It links communities on both sides of the station making it much easier to get around the area.

New bus stops, and improved walking and cycling routes in the area, will all contribute to Barnet Council's net zero carbon pledges by encouraging people to use more sustainable transport.



Led by Barnet Council, the Brent Cross West project is one of the first train station projects in England to be led entirely by a local council. The Council secured £419 million of government funding from the Department of Levelling Up, Housing and Communities to allow the project to be delivered.

Barnet Council has been supported by Mace, who has project managed the programme. The station has been built by VolkerFitzpatrick, with Network Rail a key delivery partner. Brent Cross West is operated by Govia Thameslink Railway. Amey, delivered the rail infrastructure works alongside Network Rail, remodelling the tracks and building new railway sidings.

The station's striking design was developed by engineering professional services consultancy WSP with architects Chapman Taylor. Studio Egret West designed the station's eastern entrance.

Brent Cross West is essential to unlocking wider development in the area and has been designed as a gateway to a new neighbourhood called Brent Cross Town, the 180-acre, £8bn net zero park town that is being delivered in partnership between Barnet Council and Related Argent.



Scan the QR code to view a short film Building Brent Cross West.

Find out more about the Brent Cross Cricklewood regeneration programme at [transformingbx.co.uk](https://transformingbx.co.uk)



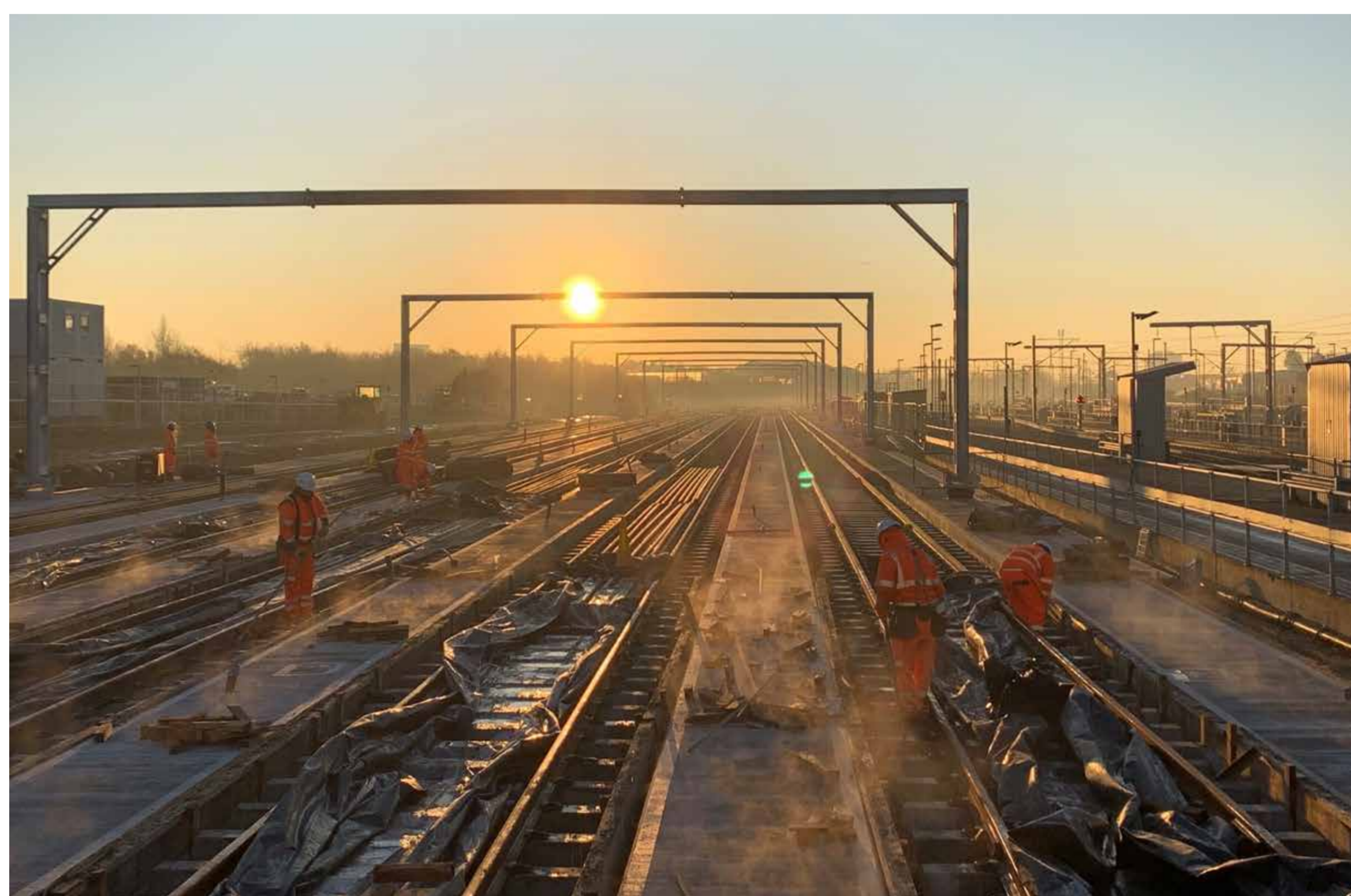
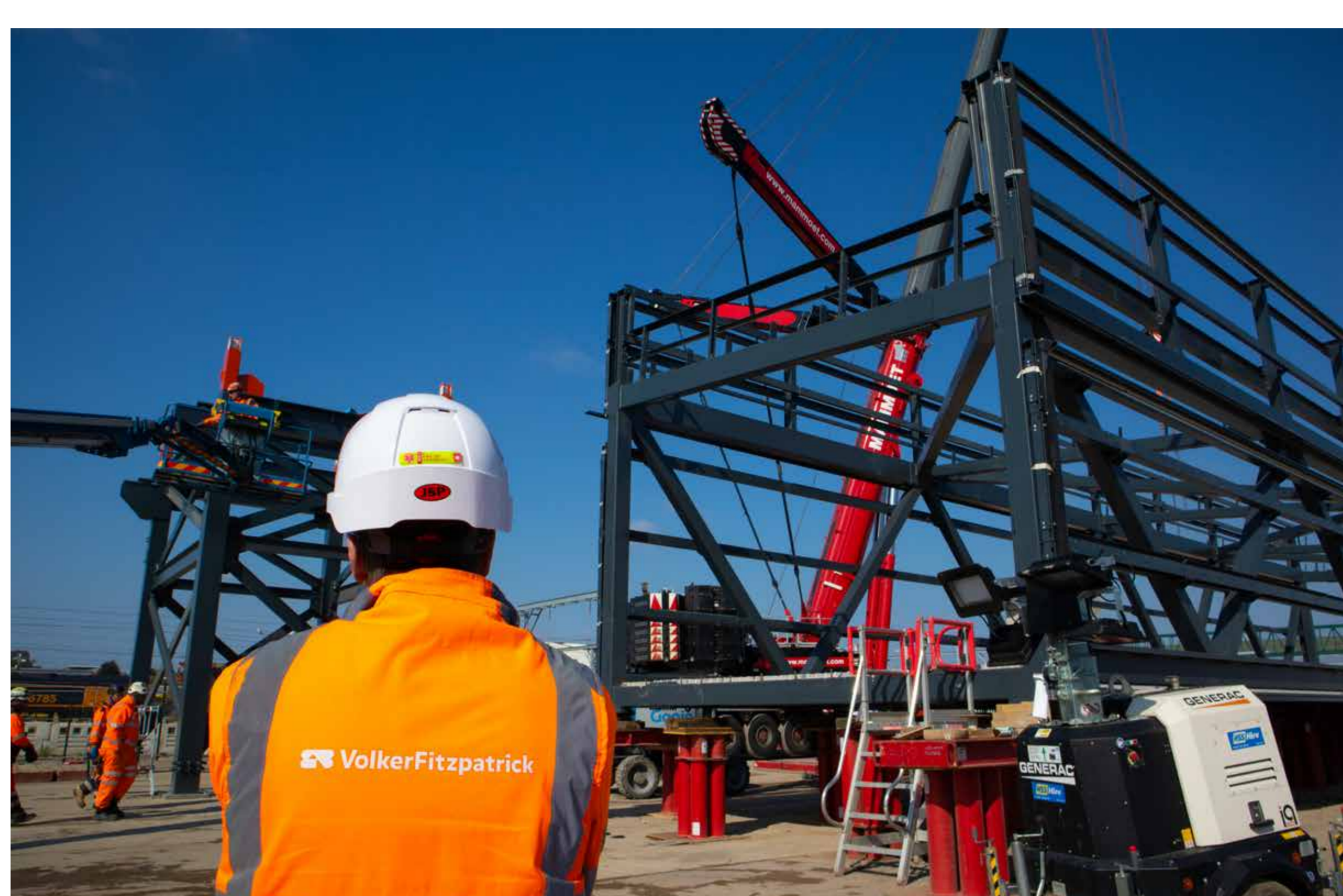


# BUILDING BRENT CROSS WEST



The station achieved planning approval in May 2020 at the beginning of the Covid-19 pandemic. It was the first planning committee that Barnet Council held virtually. The design of the station was unanimously approved.

By putting safety measures in place, work never stopped across the project. We achieved an important milestone in June 2020, when the first train made use of the new railway sidings, which were moved so work could begin on the new Brent Cross West station. The rest of the sidings were completed in March 2021, on time despite the challenges of navigating the pandemic.



Brent Cross West is a huge station at 7000 square ft and 16 metres tall.

Architecturally the steel work and feature canopies are a unique design feature, while there are 40,000 handmade bricks on the western entrance.

The eastern entrance, which provides the gateway to Brent Cross Town, uses strong, timber frames that are a long-lasting natural alternative to steel or concrete. The wood comes from sustainable Scandinavian forests and is a unique feature of this station.

Working on a live railway was challenging, and the team came together to plan how they could continue working, even when the railway was operational, ensuring the safety of the teams on site and train passengers.

A temporary footbridge was created to allow construction workers to cross the railway safely in the early part of the project, and two huge steel overbridges were fabricated off site and delivered in sections, where they were assembled.

Construction of the station finished in 2023, making Brent Cross West the first new mainline station in London in over a decade.



Scan the QR code to view a short film Building Brent Cross West.

Find out more at how we built Brent Cross West at [transformingbx.co.uk/new-station](https://transformingbx.co.uk/new-station)





# BUILDING BRENT CROSS WEST



Across the Brent Cross Cricklewood regeneration programme, we want to build a positive legacy for existing communities. Building Brent Cross West has been about so much more than just the physical station.

On the project, Barnet Council set out ambitious targets to encourage local employment and support local businesses. Our contractors were asked to ensure at least 20% of the people working on site were from Barnet or neighbouring boroughs Brent and Camden. As a result, over 100 residents played a part in building Brent Cross West.



We also wanted to provide more training and opportunities to local people, from a range of backgrounds and through a range of routes. Five young people were recruited as part of the government's Kickstart Scheme as well as apprentices.

Young people from across Barnet have been given the opportunity to learn about careers in construction thanks to tours given by teams working on site to students at Whitefield School and Barnet and Southgate College.

We've also been championing women into construction, encouraging more women to get involved in different roles on the project, including through work placements.

Meeting and working with local businesses such as family-owned social enterprise Tarem Services for cleaning, and business owner Emma Blackman who has run the staff canteen, was also really important. Emma owned and ran a food van on Brent Terrace Industrial Estate for 17 years before taking over the staff canteen at the station and fuelling the workers on site.

VolkerFitzpatrick, Mace and their subcontractors were also involved in lots of local activities to support the community during the build of the station. We raised money, collected food donations, renovated community centres, landscaped charity farmland, and more.

The Brent Cross Cricklewood regeneration area covers 370 acres. It will create space for up to 25,000 jobs as well as opportunities for education and training. We will continue to work with our partners and contractors to ensure local people benefit from the transformation of the area.



Scan the QR code to view a short film Building Brent Cross West.  
Find out more about what we're doing to support local people at [transformingbx.co.uk/opportunities](https://transformingbx.co.uk/opportunities)

